

Anti-ALPPL2 hlgG1 antibody(SGN-ALPV)

Product information

GM-58774AB-10	10 µg
GM-58774AB-100	100 µg
GM-58774AB-1000	1 mg

Antibody Information

Species Reactivity	Human; Cynomolgus
Clone	SGN-ALPV
Source/Isotype	Monoclonal Human IgG1 /k
Application	Flow Cytometry
Specificity	Detects ALPPL2(ALPG); ALPP.
Gene	ALPPL2; ALPP
Other Names	ALPPL, ALPPL2, GCAP ALP, ALPI, IAP, PALP, PLAP, PLAP-1
Gene ID	ALPPL2: 251(human) ALPP: 250(human)、102133045(Cynomolgus)
Background	Alkaline phosphatase, placental type also known as placental alkaline phosphatase (PLAP) is an allosteric enzyme that in humans is encoded by the ALPP gene. PLAP is a tumor marker, especially in seminoma and ovarian cancer. There are at least four distinct but related alkaline phosphatases: intestinal (ALPI), placental (this enzyme), placental-like (ALPPL2), and liver/bone/kidney (ALPL) (tissue-nonspecific). The first three are located together on chromosome 2, whereas the tissue-nonspecific form is located on chromosome 1. The coding sequence for this form of alkaline phosphatase is unique in that the 3' untranslated region contains multiple copies of an Alu family repeat. Alkaline phosphatase, placental type is a membrane-bound glycosylated dimeric enzyme, also referred to as the heat-stable form, that is expressed primarily in the placenta, although it is closely related to the intestinal form of the enzyme as well as to the placental-like form.
Storage	Store at 2-8°C short term (1-2 weeks). Store at ≤ -20°C long term. Avoid repeated freeze-thaw.
Formulation	Phosphate-buffered solution, pH 7.2.
Endotoxin	< 1 EU/mg, determined by LAL gel clotting assay

Version:3.1 Revision Date:12/29/2023

Data Examples

Flow cytometry

H_ALPPL2(ALPG) HEK-293 Cell Line (Catalog # GM-C26399) was stained with Anti-ALPPL2 hlgG1 antibody(SGN-ALPV) (Catalog # GM-58774AB) or isotype control antibody, followed by anti-Human IgG APC-conjugated Secondary Antibody.

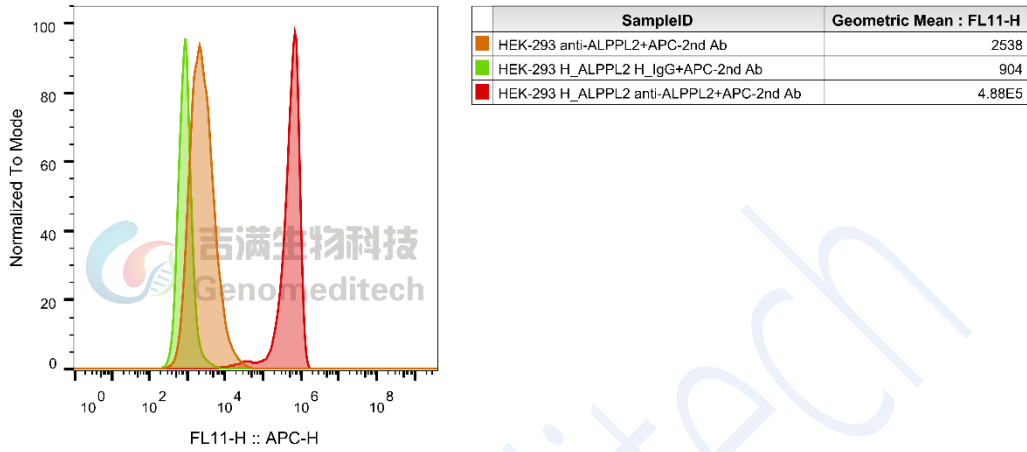


Fig 1. FACS

Flow cytometry

Cynomolgus_ALPP HEK-293 Cell Line (Catalog # GM-C26410) was stained with Anti-ALPPL2 hlgG1 antibody(SGN-ALPV) (Catalog # GM-58774AB) or isotype control antibody, followed by anti-Human IgG APC-conjugated Secondary Antibody.

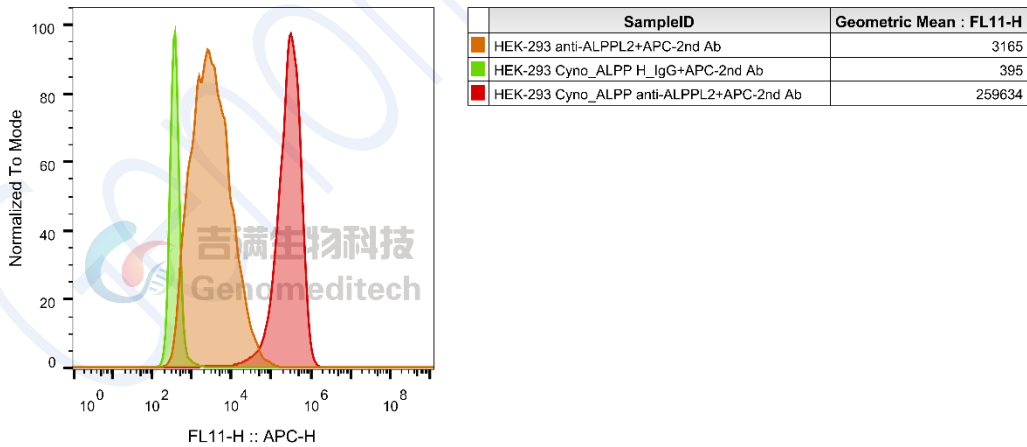


Fig 2. FACS

Flow cytometry

H_ALPP HEK-293 Cell Line (Catalog # GM-C26401) was stained with Anti-ALPPL2 hlgG1 antibody(SGN-ALPV) (Catalog # GM-58774AB) or isotype control antibody, followed by anti-Human IgG APC-conjugated Secondary Antibody.

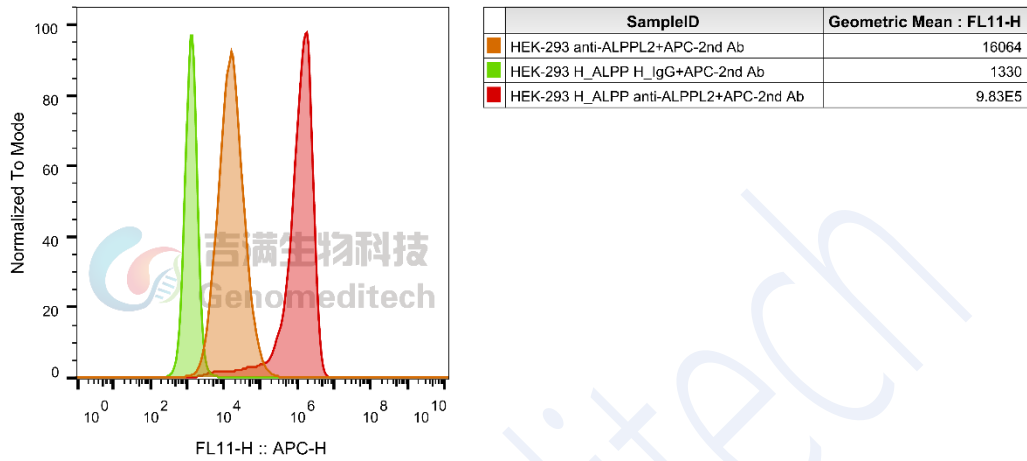


Fig 3. FASC